

These Instructions are for the following models: OR-77 and OR-78.  
 Wick replacement should be performed on a completely cool heater after the tank is empty and the remainder of the kerosene in the heater has been burned off.



### Step 1

Remove the batteries from the heater.



### Step 2

Remove the wick adjusting knob by pulling straight out. Remove the tank cap.



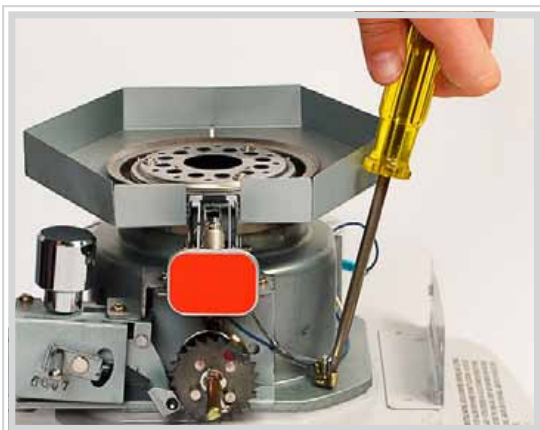
### Step 3

Unscrew 4 screws from the each side of the case.



### Step 4

Carefully lift off the case.



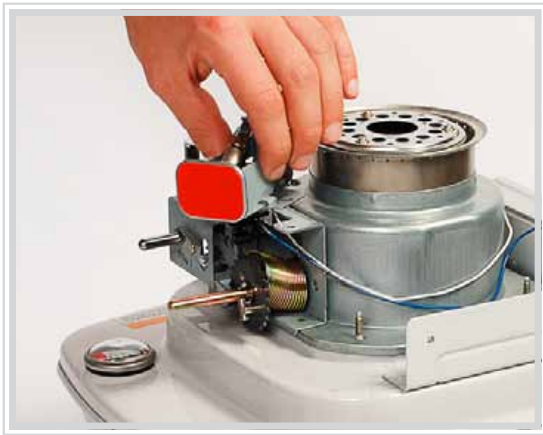
### Step 5

Unscrew 4 wing nuts.



### Step 6

Unscrew the screw which holds the wind cover and take off the wind cover.



### Step 7

Remove the automatic ignition assembly by unscrewing 2 screws.



### Step 8

Pull out the wick holder assembly.



### Step 9

Remove the sleeve from the assembly.



### Step 10

Remove the wick from the holder by folding it inward. Loosen it from the sharp metal teeth in the inner surface of the holder and then slide it out.



### Step 11

Replacement wick has a black line. Fold the new wick and slide it into the holder up to the line. The black line on the outside of the wick should match the top edge of the holder. Then carefully press the wick against the teeth inside the holder to obtain a firm grip.



### Step 12

Insert the pinion on the inside of the wick control shaft into top portion of the rack of the wick holder.



### Step 13

Replace the wick adjusting knob on its shaft and check to see that the spring of the wick adjuster assembly is free of torque (has no tension).



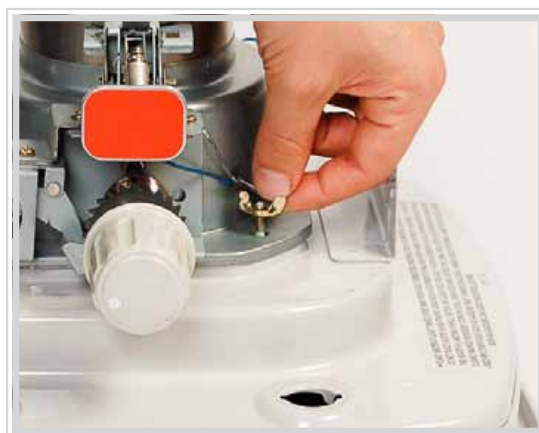
### Step 14

Ensure that the rubber gasket is in place and slide the wick and holder back on the draft tube. Rotate them 90 degrees left and right and up and down until the wick slides freely.



### Step 15

Position the adjuster shaft to the front of the heater. Use the knob to rotate the wick control shaft clockwise by  $\frac{3}{4}$  turn. This rotates the ratchet clockwise by  $\frac{3}{4}$  turn. Turn the knob clockwise and counter-clockwise a few times to make sure that the wick travels up and down smoothly. Hold the latch to prevent the safety shut off device from being activated.



### Step 16

Reinstall the automatic ignition assembly. Snug, but do not tighten 4 wing nuts on the mounting studs, then raise the wick to the full "up" position, and evenly tighten wing nuts in several steps.



### Step 17

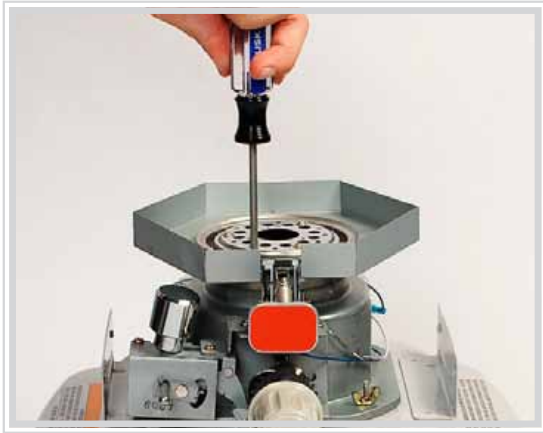
Check height of wick (10+-1mm). Check for correct clearance between wick holder and draft tube (all around). This can be done easily using 5/32 or 3/16 dia. drill bit.



### Step 18

Check the function of safety shut off mechanism by pushing down the manual shut off lever or upsetting the pendulum.





### Step 19

Replace the wind cover.



### Step 20

Replace the cabinet, tighten 4 screws and reinstall the wick adjusting knob.



### Step 21

Ensure the proper chimney position. Install the batteries in the battery case. Fill the tank with clean, pure 1-K kerosene. Wait at least 60 minutes for kerosene to fully saturate the new wick.